



The Dose

OCTOBER
2024

The Merrick Group, Inc.

Merrick Group participated in Talen Energy's 6th Annual Trap Shoot. Talen raised over \$11,000 for the Berwick Area United Way!



Participants: Matt Kalinchok, Dave Probert, Dan Merrick, Jim Fisher, & Jeff Helsel



WHERE ARE WE WORKING THIS MONTH?



Brunner Island

Catawba

Oconee

Montour

VC Summer

Vogle

Comanche Peak

Watts Bar



American Red Cross

We hope all of you along with your families and loved ones are safe from hurricane Helene. We are thinking of all those who were in the path of the hurricane and affected. Please join us in helping those in need by donating below:

<https://www.redcross.org/donate/dr/hurricane-helene.html/>

- ✓ Keep sending photos in for our fall contest.
- ✓ Consistently check your email & employee portal for up-to-date project information.
- ✓ Make sure you are communicating all changes with our office (New DL, change in direct deposit, address or phone number).
- ✓ Don't forget about our employee referral program!



WORK PACKAGE & PROCEDURE USE & ADHERANCE

As nuclear professionals, we must perform the correct action on the correct component, following the applicable procedure every single time we go out in the field.



PRE-JOB BRIEF

Every activity we perform has a work order and procedure associated with it. Prior to the beginning of a task, you will participate in a Pre-Job Brief where you will discuss the specific tasks, roles and responsibilities of each team member and cover relevant OE and potential human performance errors. During the Pre-Job Brief, you will be notified of any anticipated QC Hold Points in your Procedure. You must sign onto the clearance prior to breaking the plain of the component.



CCV & TWO MINUTE DRILL

Be sure to walk down your assigned component prior to initiating work. You will need to perform a proper CCV and a Two Minute Drill prior to work, as well as checking and signing off on all applicable tags in the work area. While communicating with your crew, be sure to engage in the phonetic alphabet as well as using three part communication to ensure all members of the crew understand next steps in the procedure.



PROCEDURE

You must follow all steps in the procedure as they are written. Be sure to use the circle/slash method in order to be sure all paperwork is up to date at all times. Only the person who has completed the work should sign off on the step. You should never complete paperwork on someone else's behalf. If your work environment changes during the course of work, stop and perform another Two Minute Drill to ensure you can safely follow all written instructions without deviation.



STOP WORK

STOP when unsure about the next steps in your work package, when conditions change and you cannot safely complete the steps, when you come to a QC hold that requires you to contact QC prior to continuing work, or if ANYTHING seems unusual or unexpected. Take the time to call your Supervisor and ask for guidance before moving forward.



END OF ACTIVITY OR SHIFT

Once work is complete, or at the end of your shift, you will return to the office to complete any additional paperwork necessary. You will also sign off of the clearance at the end of work or the end of your shift, whichever comes first. If work is not complete you will need to prepare to give details to the next shift at turnover as well as ensure your work package has all circle slashes marked to ensure what step the next shift will start on.

THINK SAFE, WORK SAFE, BE SAFE

Peer review is a critical process that can help catch mistakes that might be overlooked, share best practices, and enhance overall safety and efficiency in power plant operations. Evaluating one another creates and maintains a higher operational standard.

Why Peer Review Matters?

- **Error Detection & Prevention** – a fresh perspective can spot issues that may have been overlooked. Catching errors early significantly reduces the likelihood of accidents.
- **Improved Safety Standards** – Peer reviews ensure safety protocols are consistently followed while encouraging employees to stay vigilant
- **Knowledge Sharing** – Peer review creates an environment of learning and continuous improvement through sharing insights and experiences
- **Accountability, Transparency, & Regulatory Compliance** – Encourages an accountability culture and motivates employees to maintain high standards of work

WHATS NEW?

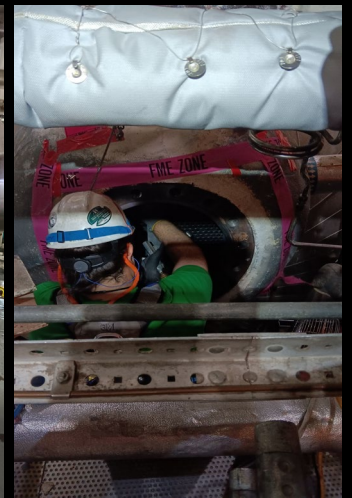
Constellation energy recently signed a 20-year power purchase agreement with Microsoft that will pave the way for the launch of the CCEC – Crane Clean Energy Center and restart of Three Mile Island Unit 1 near Harrisburg, PA. TMI Unit 1 was shut down for economic reasons 5 years ago but could come back into service by 2028 to power Microsoft's data center energy needs including Artificial Intelligence. Data centers are critical to our nation's economic and technological competitiveness and require an abundance of energy that is reliable every hour – nuclear plants are the only energy source that can consistently deliver. Restoring this unit will add over 800 megawatts of carbon-free energy to the grid.



**Great work by Vogtle
U1 crew!**

**“Thanks for all you guys do!
We appreciate the quality
leadership from all of you
supervisors as well as the
quality work your crew
members provide. Y'all make
mine and Dennis' jobs easy!”
– Jeffrey Feagin, Task Director
Southern Nuclear Operating
Company**

FALL SEASON IS IN FULL SWING



Row 1: McGuire HX set up & MSR Vacuum Testing

Row 2: USS Stennis

Row 3: Vogtle HX U1 & Montour

Row 4: Montour U1 Absorber Duct Cleaning

